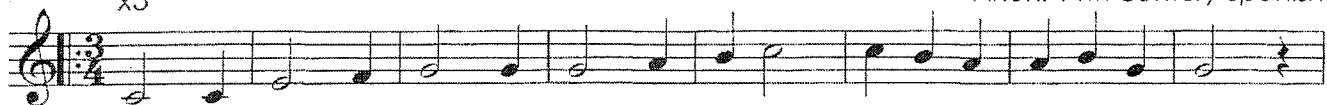


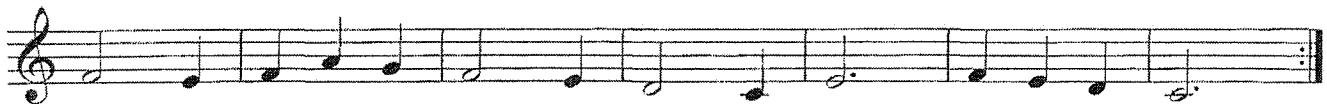
Polorumregina

Anon. 14th century Spanish

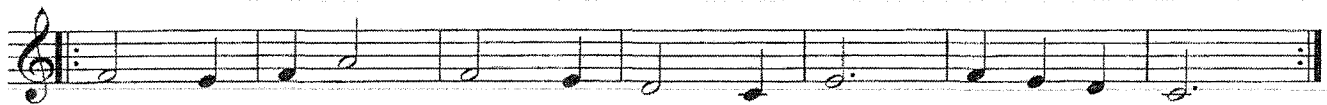
x3



Po - lo - rum re - gi - na, om - ni - um no _____ stra,



Stel - la ma - tu _____ ti - na, de - le - sce - le _____ ra.

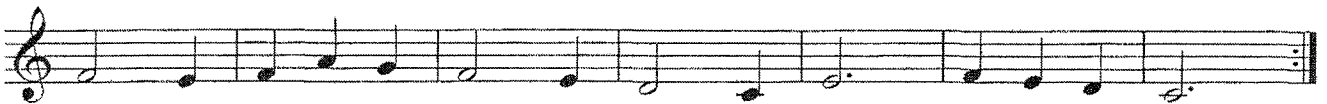


1. An - fe par - tum vir - go De - o gra - vi _____ da,
2. Et in par - tum vir - go De - o fe - cun _____ da,
3. Et post par - tum vir - go ma - ter e - nix _____ a.

x3



Sem - per per - man - sis - ti in - vi - o _____ la _____ ta.



Stel - la ma - tu _____ ti - na, de - le - sce - le - ra.